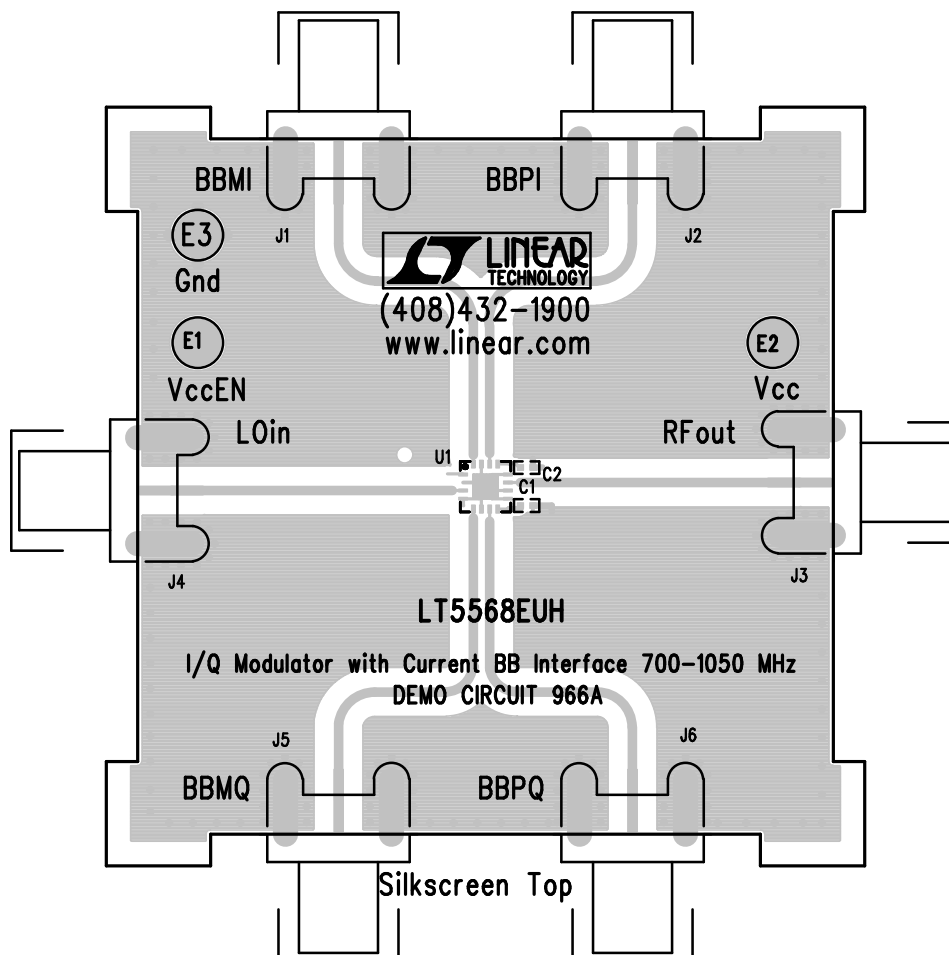



Assembly Top Drawing



APPROVALS			 <div>1630 McCarthy Blvd. Milpitas, CA 95035 PH: (408)432-1900</div>
	INIT	DATE	
DRAWN			
CHECK			
DESIGN	Antonina K		
ENGR	Doug S.		
TITLE: I/Q Modulator with Current BB Interface 700-1050 MHz			
SIZE NONE		DC966A	REV. 1
DES-260044		SHT 1 of 2	
SCALE = NONE			

NOTES : Unless Otherwise Specified

1. BREAK BOARDS FROM THE PANEL WHEN ASSEMBLY IS COMPLETE.
2. OPTIONAL COMPONENTS ARE UNSTUFFED AND SHOULD BE FREE OF SOLDER AFTER ASSEMBLY.